

CONTACT ARRANGEMENT

code for x	function	toggle towards keyway	toggle opposite to keyway
N	On-On	1-2, 4-5, 7-8, 10-11	2-3, 5-6, 8-9, 11-12
R	Mom-On		

code for x	function	toggle towards keyway	toggle in center	toggle opposite to keyway
P	On-Off-On			
S	Mom-Off-Mom	1-2, 4-5, 7-8, 10-11	open	2-3, 5-6, 8-9, 11-12
T	Mom-Off-On			
PA	On-On-On			
SA	Mom-On-Mom	1-2, 4-5, 7-8, 10-11	2-3, 4-5, 7-8, 11-12	2-3, 5-6, 8-9, 11-12
TA	Mom-On-On			

Specifications:

Contact rating: 3A, 250V AC / 6A, 125V AC
4A, 30V DC / 5A, 12V DC
6A, 6V DC

Contact resistance: 20mOhm max.

Insulation resistance: 1 000MOhm min. at 500V DC

Dielectric strength: 1 500V, 50Hz for the duration of 1 minute

Operating temperature: -45°C to +140°C

Mechanical life: min. 200 000 cycles (SA, TA: 100 000 cycles)

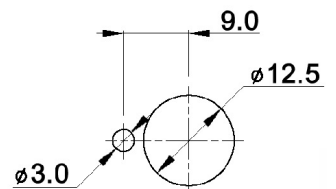
Soldering conditions: hand-soldering: max.: 420°C, 3sec., 60W
auto-soldering: max.: 270°C, 5sec.

Mounting instruction: max. torque: 137Ncm

Material: Terminal / contact: brass, silver plated
Case: DAP
Housing: stainless steel, CNS9265
Bushing: copper alloy, C3604BD nickel plated
Actuator: copper alloy, C3604BD chrome plated

Included accessories: 2 pcs. nut 15/32-32, nickel plated, 14mm wrench size
1 pc. tooth washer
1 pc. locking washer

PANEL MOUNTING



Tolerances: 0.00: ±0.25mm 0.0: ±0.40mm	Date	Name
	04/09	dr
Modifications	Date	Name

MTG 406 x

knitter-switch

30 18 10

Page

1/1